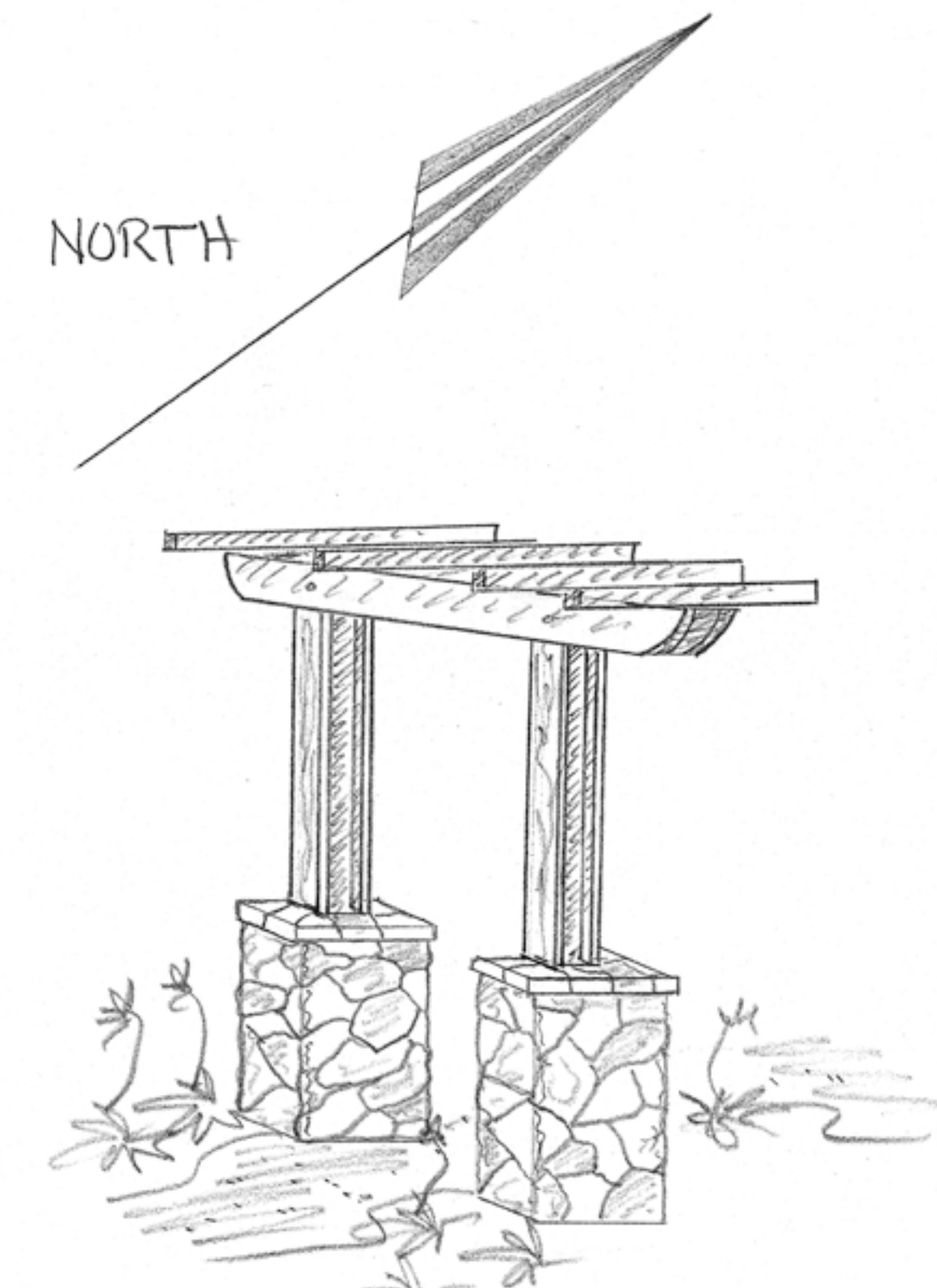


EXISTING PARK TREES

NORTH

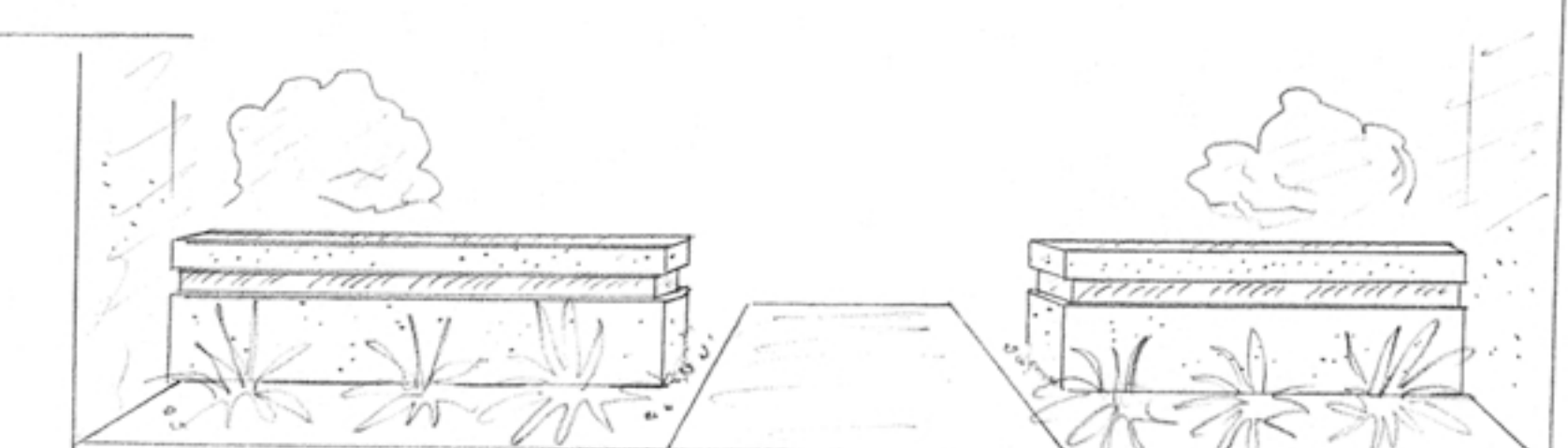
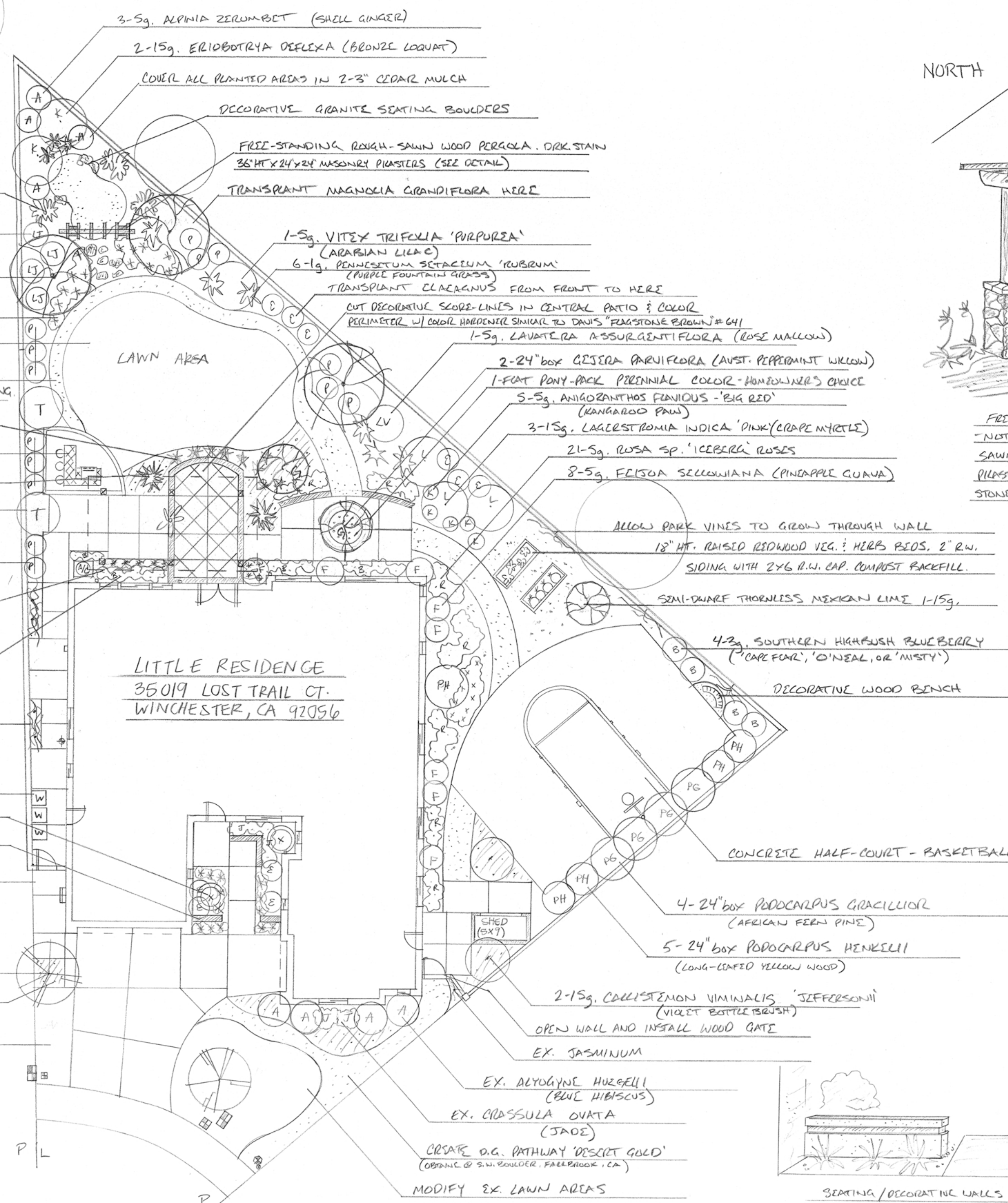


FREE-STANDING PERGOLA PERSPECTIVE  
NOT TO SCALE - LOG. BEAMS - ROUGH  
SAWN DOUG FIR. DRK. STAIN. MASONRY  
PILASTERS 36x24x24 W/ ELDO RADO FAUX  
STONE CAP & FACING: 'MOUNT. LEDGE-BITTERROOT'

- 3-5g. PHILODENDRON SELOUM (SPLIT-LEAF PHILODENDRON)
- 4-5g. CALLISTEMON VIMINALIS 'LITTLE JOHN' (DWARF BOTTLEBRUSH)
- 2-15g. KOELREUTERIA PANICULATA (GARDEN TREE)
- 50-1g. HEMEROCALLUS HYBRIDUS (GOLD EVERGREEN PAILLY)
- DWARF FESCUE SOFT LAWN AREA. FUTURE POOL SITE.
- 2" COMPACTED 'DESERT GOLD' DECOMPOSED GRANITE PATHWAYS. USE STABILIZING AGENT. 1/4" R.W. BENCH BOARD COING.
- 14-1g. MOREA IRRIDIODES (FORT-NIGHT LILY)
- PRE-BUILT BARBECUE CENTER
- 2-15g. PHORMIUM TENAX ('BRONZE' N.Z. FLAX)
- 2-15g. TRISTANIA CONFIRTA (BRISBANE BOX)

- 14-5g. PITTOSPORUM TUBIFERA 'VARIOLATA' (VARIOLATED LEAF PITTOSPORUM)
- FREE-STANDING LARGE BEAM WOOD LATTICE PATIO COVER. SIX POSTS W/ MASONRY PILASTERS
- BASE. 36"HT X 24" X 24" STUCCO FINISH.
- 17-1g. BUXUS JAPONICA 'GREEN BEAUTY' (JAPANESE BOXWOOD)
- 4-5g. CALLIANDRA HAEMATOCEPHYLLA (PINK POWDER-PUFF VINE)

- WASTE RECEPTACLES
- 2-15g. PODOCARPUS sp. 'ICEE BLUE'
- 18" BLOCK & STUCCO DECORATIVE & SEATING WALLS (SEE DETAIL)
- NAT. GRAY CONCRETE PATIO & WALKWAY AREAS WITH LIGHT BROOMED FINISH
- EX. RED LEAF PLUM TREES (2)
- RECYCLE EX. CRANTHUS GROUND COVER
- MODIFY EX. LAWN AREAS



SEATING / DECORATIVE WALLS PERSPECTIVE (NOT TO SCALE)  
18" HT. BLOCK W/ SMOOTH STUCCO FINISH INC. CAP. COLOR TO RESEMBLE HOME. 8" BLOCK BASE + CAP W/ 4" BLOCK INDENTATION.

**PITKIN**  
**LANDSCAPE**  
**AND DESIGN**

CONTRACTORS LIC.# 936538